

ELLIOTT EXPRESS

Volume 2, Issue 3
March 2025



Mission Statement

*Quality choices in a caring and inclusive, home-like community.
A tradition of promoting dignity and independence for those we serve and their families.*

Looking for Pet Visitor Volunteers

Are you interested in bringing your furry friend in to visit people living at the Elliott Community?
Contact our Volunteer Coordinator to become a volunteer at volunteer@elliottcommunity.org



JOKE JUNCTION





February SNAPSHOTS



March Community Centre/Chapel

Programs & Events

Wednesday March 5th at 2:00pm

International Women's Day Presentation with Cindy McMann

"Top Women Firsts"

Thursday March 6th at 10:00am

The Magic of Maple Syrup Presentation

with Hoover Maple Syrup Farm

Wednesday March 12th at 10:00am

Trinity United Service in the Chapel

Wednesday March 12 at 2:00pm

Happy Hour with Martin Wall entertaining

Wednesday March 19th at 2:00pm

Caribbean Chair Movement with Kween

Friday March 15th at 2:00pm

Irish Dancers Performance from Finnegan's Irish School Dance

Monday March 17th at 2:00 pm

St. Patrick's Day Party with Rob Edlefsen

Wednesday March 19th at 10:00am

Roman Catholic Mass

Thursday March 20th at 2:00pm

Birthday Party with Kim Atkins entertaining

Monday March 24th at 2:00pm

Speaker Series with Ken Irvine- Famous Guelphites

Tuesday March 25th at 2:00pm

Magic Show with James Salan

Wednesday March 26th at 10:00am

St. Andrew's Presbyterian Service

Wednesday March 26th at 2:00pm

Accordion Music with Gary

MARCH OUTINGS

Monday March 3rd Elle Nail Salon Outing

Leaving at 1:30pm

**Cost is \$42 includes
transportation & manicure**



Saturday March 8th Wizard of Oz Play Outing

Leaving at: 1:00 p.m.

Cost is \$48 including transportation & ticket

Wednesday March 19th Woodlawn Bowling Outing

Leaving at 1:30pm

**Cost is \$10 transportation
Plus cost of Bowling**



Sunday March 23rd Guelph Storm Outing

Leaving at 1:15pm

**Cost is \$10 Transportation
Plus spending money**



*All outings require sign-up through Recreation. Please note that spots are limited, so while we strive to accommodate all requests, availability is not guaranteed. **Winter outings are all weather permitting***

WORKING ON OUR WINGS



The Elliott Community is working to become the first long-term care home in Guelph accredited in The Butterfly Approach, an innovative, person-centered and emotion-focused model of care. The Butterfly Approach is being introduced on the Wellington, Fountain and Edinburgh home areas on the third floor in Long-term care.

Opening up the third floor

You may have noticed that the door between the Edinburgh and Fountain home areas is now open. Although work is still on-going in this area, we are thankful for the sense of community this creates and we look forward to visiting with friends in all home areas on the third floor.

Elevator Mural on Edinburgh

We are pleased to share that we are working with Sensory-scapes on a mural that will brighten up the entrance to Edinburgh and bring the outside in with images of home and a beautiful garden. We look forward to the mural being installed sometime in the spring along with the door wraps. We will keep the community posted with updates on the timing as we learn more.

WORKING ON OUR WINGS



Telling our Story in the Environment

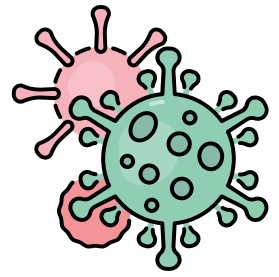
As we reach the final stages of Butterfly implementation on the third floor we are working to fill the empty walls throughout the hallways. We would like to fill some of these walls with items that are personal and meaningful to the people who live here and are looking for donations.

Examples of items donated so far include musical instruments, records, sporting equipment, photos and artwork. If you have something that you would like to donate to Wellington, Fountain or Edinburgh please speak to Lindsay Marinovic to discuss. Unfortunately there may be some items we can't accept due to legislative requirements but will try our best to find a place at The Elliott where your items can be enjoyed if we are able.

If you have questions or ideas regarding The Butterfly Approach, please contact Lindsay Marinovic, Resident Experience Lead at 519-822-0491 ext. 2110.



INFECTION CONTROL & PREVENTION UPDATE



The Power of Clean Hands: Why Hand Hygiene Matters!

Did you know that proper hand hygiene is the single most effective way to prevent infections? Germs spread easily in long-term care homes, but with good hand hygiene, we can protect everyone from illnesses like the flu, COVID-19, and norovirus.

When Should You Wash Your Hands?

- Before eating or handling food**
- After using the restroom**
- After coughing, sneezing, or touching your face**
- After touching high-contact surfaces like door handles and railings**

Soap & Water vs. Hand Sanitizer

Use soap and water when hands are visibly dirty, greasy, or after using the washroom.

Use hand sanitizer when hands look clean but still need disinfection—just make sure it contains at least 70% alcohol!

Hand Hygiene Myth-Buster!

- Myth: "Gloves replace the need for hand hygiene."**
- Fact: Gloves can spread germs just like hands! Always wash hands before and after wearing gloves.**

By practicing good hand hygiene, we help create a safer environment for everyone. Let's make clean hands a habit!

Shining Star of the Month



Donna has been chosen as our February Shining Star Of the Month for her exceptional dedication, kindness, and professionalism. As the first point of contact at The Elliott, she creates a warm and welcoming environment for residents, families, and visitors. Beyond her front desk role, Donna provides invaluable support across multiple departments, ensuring smooth operations and safety. Her problem-solving skills, reliability, and compassionate approach make her an essential part of our team.

Thank you, Donna, for all that you do!!

If you would like to nominate a staff member for a Shining Star award, please complete [this brief online form](#) or scan the QR code below

