

# ELLIOTT EXPRESS

Volume 2, Issue 1  
January 2025



## Mission Statement

*Quality choices in a caring and inclusive, home-like community.  
A tradition of promoting dignity and independence  
for those we serve and their families.*

## DID YOU KNOW

Our Café reopened on a limited basis in December! Here's a quick reminder: you can now pay at the General Store, which has moved to its new location in the Community Centre, and pick up your Hot-to-Go meal from the Café on Wednesdays and Fridays between 11:00 am and 2:00 pm. If you'd like to stay and enjoy your meal, tables and chairs are available in the Cafe Atrium.

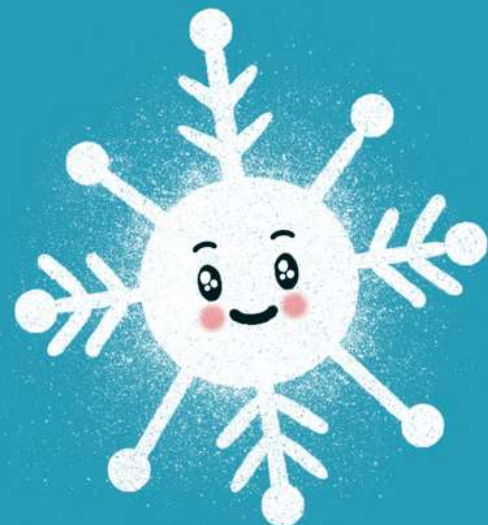
## JOKE JUNCTION

**Why did the snowman go to the doctor?**

He was getting chills.



**Which season is the most successful?**



**WIN-ter!**



**December  
SNAPSHOTS**



# **January Community Centre Programs & Events**

**Wednesday January 8th at 2:00pm**

**Birthday Party with Rob Edlefsen in the Community Centre**

**Tuesday January 14th at 2:00pm**

**Seniors for Climate Action Now Presentation & Raging Grannies Performance  
in the Community Centre**

**Wednesday January 15th at 10:00am**

**Roman Catholic Mass in the Chapel**

**Wednesday January 15th at 2:00pm**

**Hinduism: Seeking Spirituality in Nature Speaker Series with Dr. Saxena  
In the Community Centre**

**Monday January 20th at 2:00pm**

**Beat the Blues Tropical Party with John Pebble  
in the Community Centre**

**Wednesday January 22nd at 10:00am**

**St. Andrew's Presbyterian Service in the Chapel**

**Wednesday January 22nd at 2:00pm**

**Accordion Music with Gary in the Community Centre**

**Friday January 24th at 2:00pm**

**Robbie Burns Party with Bob MacLean  
in the Community Centre**

**Tuesday January 28th at 2:00pm**

**Memorial Service in the Community Centre**

**Thursday January 30th at 2:00pm**

**Dublin St. United Service in the Community Centre**

# JANUARY OUTINGS

Sunday January 5th

Guelph Storm Outing

Leaving at 1:15pm

Cost is \$10 includes transportation



Saturday January 11th

Cambridge Butterfly Conservatory Outing

Leaving at 1:00pm

Cost is \$28 total for transportation & admission

Monday January 27th

Stone Road Mall Shopping Outing

Leaving at 1:00pm

Cost is \$10 transportation + spending money



*All outings require sign-up through Recreation. Please note that spots are limited, so while we strive to accommodate all requests, availability is not guaranteed. \*\*Winter outings are all weather permitting\*\**

# WORKING ON OUR WINGS



The Elliott Community is working to become the first long-term care home in Guelph accredited in

The Butterfly Approach, an innovative, person-centered and emotion-focused model of care. The

Butterfly Approach is being introduced on the Wellington and Fountain home areas on the third floor in Long-term care.

The Butterfly Approach is coming to Edinburgh! We are excited to share that The Elliott Community will be expanding implementation of The Butterfly Approach across the whole third floor to include the Edinburgh home area. The Butterfly Approach was considered in the initial design of Edinburgh, as a result core components of The Butterfly environment are already in place. In the New Year, we will continue to enhance the environment with colour and life, filling it with items that spark conversation and “change a moment.”

# WORKING ON OUR WINGS



We will be offering a condensed, three day version of the training to staff supporting Edinburgh as well as any new Butterfly staff on Wellington and Fountain beginning later this month. Our goal is to get this group caught up so the whole team on the third floor can complete the last day of training together this spring. We look forward to another year of growth along our person-centred change journey in 2025!

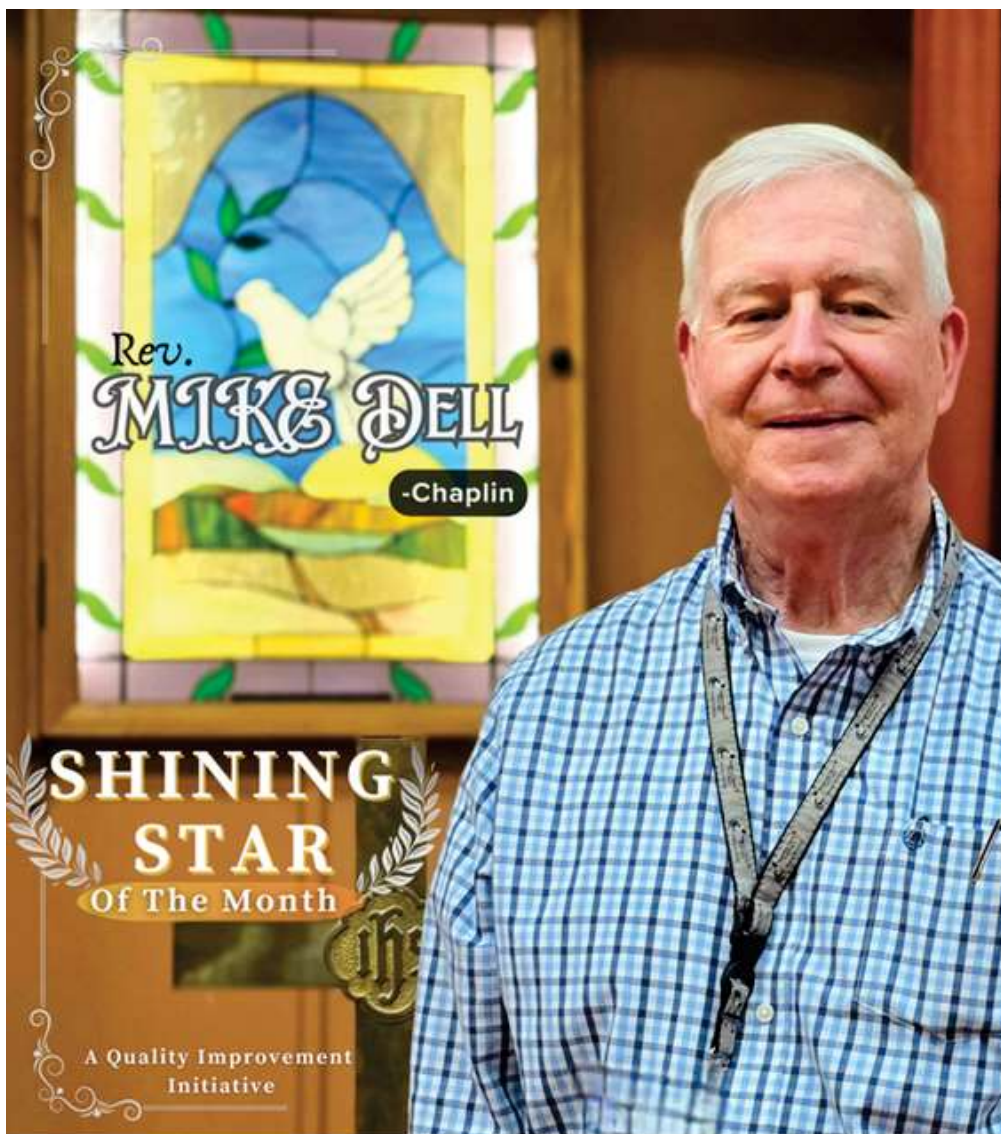
*If you have questions or ideas regarding The Butterfly Approach, please contact Lindsay Marinovic, Resident Experience Lead at 519-822-0491 ext. 2110.*

We delight in the beauty of the butterfly,  
but rarely admit the changes  
it has gone through to  
achieve that beauty.

Maya Angelou



# SHINING STAR OF THE MONTH



**Pastor Mike has been chosen as our December Shining Star for his extraordinary kindness, compassion, and dedication. He offers comfort and support to residents, their families and staff creating meaningful connections and uplifting those in need. From organizing heartfelt events like the Remembrance Day Service to maintaining the Chapel as a peaceful space, Pastor Mike's impact is felt throughout our community! Thank you Mike, for bringing light and hope to the Elliott Community!**