

ELLIOTT EXPRESS

Volume 2, Issue 4
April 2025



Mission Statement

Quality choices in a caring and inclusive, home-like community.

A tradition of promoting dignity and independence for those we serve and their families.

RECIPES NEEDED



Do you have a favorite recipe to share?

Recreation staff would love to hear from you! Whether you're someone who lives here, a family member, or part of The Elliott Community team, we want to know—what do you love to make, bake, or create in the kitchen? Is there a meal you miss from the past? Maybe something a loved one used to make that you haven't had in ages?

Send your favorite recipes by emailing agolbourne@elliottcommunity.org, dropping them off with Donna at the front desk, or connecting with recreation staff in your area.

We hope to use these recipes and ideas in future programming. And with your permission, we may share them in upcoming newsletters!

JOKE JUNCTION



ELLIOTT COMMUNITY

EASTER EGG HUNT

FRIDAY APRIL 18TH
10:00 A.M. SHARP

\$5.00/CHILD
*BRING YOUR OWN
BASKETS

Registration starts at 9:15am
Come early for face painting and
photos with the Easter Bunny!

170 Metcalfe Street
Register at the Rainbow Walkway
in the Back Parking Lot





**March
MEMORIES**



April Community Centre/Chapel

Programs & Events

Wednesday April 2nd at 2:00pm

Healthy Living Presentation with Danielle Garcia

Tuesday April 8th at 2:00pm

Memorial Service

Thursday April 10th at 2:00pm

Birthday Party with Tricia Coles Entertaining (Vocals)

Tuesday April 15th at 10:00am

St. Andrew's Presbyterian Service

Wednesday March 19th at 10:00am

Roman Catholic Mass

Wednesday April 16th at 2:00pm

Spring Fling with Celebrity Productions (Vocals)

Friday April 19th at 10:00am

Community Easter Egg Hunt

Friday April 19th at 2:00pm

Good Friday Chapel Service

Tuesday April 22nd at 10:00am

Dublin St. United Service

Wednesday April 23rd at 2:00pm

Light Shine Singers Choir Performance

Thursday April 24th- 10:00am-2:00pm

Stars of Modern Jewelry Sale

Monday April 28th at 2:00pm

50s Diner Social

Wednesday April 30th at 2:00pm

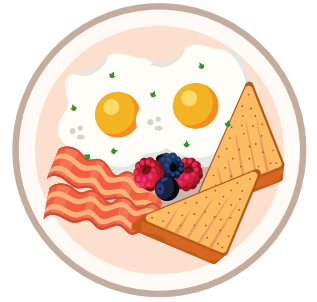
Accordion Music with Gary

APRIL OUTINGS

Monday April 7th- Brunch Outing to Denny's

Leaving at 10:00am

**Cost is \$10 transportation plus
cost of Brunch**



Saturday April 19th Easter Extravaganza

Craft Market Outing at Trinity Church

Leaving at: 1:30 p.m.

Cost is \$10 transportation plus spending money



Wednesday April 22nd- John Boys

Choir Concert Outing

Leaving at 1:00pm

**Cost is \$60 which includes transportation
& cost of ticket**

Tuesday April 29th- City Tour with Commentary by

Ken Irvine- Leaving at 1:00pm

**Cost is \$15 which includes Transportation
& Cost of Tour**

*All outings require sign-up through Recreation. Please note that spots are limited, so while we strive to accommodate all requests, availability is not guaranteed. **Winter outings are all weather permitting***

WORKING ON OUR WINGS



The Elliott Community is working to become the first long-term care home in Guelph accredited in The Butterfly Approach, an innovative, person-centered and emotion-focused model of care. The Butterfly Approach is being introduced on the Wellington, Fountain and Edinburgh home areas on the third floor in Long-term care.

Developing our Stories

Knowing people's life history and personal interests and using that knowledge to shape their everyday experience is a key element of The Butterfly Approach. By knowing who and what is important to the people who live here, we are able to connect and engage with one another. We are developing this in a few ways. First, by creating word clouds – a piece of colourful art made of words to help start a conversation. These will be posted outside of each resident's room that wishes to have one. Second, we are creating activity bins for each person containing items to engage with and spark conversation.

Team members and volunteers are helping to get this project on the go. We invite family members and care partners to get involved by providing small items or photographs that may be enjoyed in the activity kit of the person they support and sharing any information with the team that may be beneficial to include on a word cloud.

WORKING ON OUR WINGS



Looking for Mugs

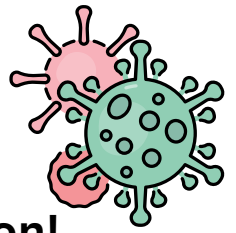
Do you have a cupboard full of coffee mugs collecting dust? If you do, please consider bringing them to The Elliott. We are collecting different mugs to make coffee or tea time feel more home. Colourful, funny and unique mugs that are average sized and dishwasher safe are preferred.

If you have coffee mugs or tea cups to donate, please bring them to Lindsay Marinovic's office in the orange hallway on the Wellington home area. Thank you for contributing!

If you have questions or ideas regarding The Butterfly Approach, please contact Lindsay Marinovic, Resident Experience Lead at 519-822-0491 ext. 2110.



INFECTION CONTROL & PREVENTION UPDATE



Spring into Infection Prevention: Stay Healthy This Season!

As the weather warms up and we welcome spring, it's important to remember that infection prevention doesn't take a break! With the change of seasons comes allergies, flu, norovirus, and other infections that can spread easily in long-term care settings. Here's how we can stay safe and healthy this spring.

Spring Cleaning for a Healthier Home!

Spring is the perfect time for a deep clean to remove dust, allergens, and germs. Focus on:

- ✓ High-touch surfaces – Door handles, light switches, call bells, and railings should be disinfected regularly
- ✓ Personal items – Phones, tablets, and glasses collect germs too! Wipe them down daily
- ✓ Shared spaces – Dining areas, lounges, and common rooms should be cleaned frequently

Is It Allergies or a Cold?

Spring allergies can mimic cold symptoms, but knowing the difference helps prevent unnecessary antibiotic use.

If symptoms last more than 10 days or include a fever, it's more likely a cold or infection—stay home and rest!

IPAC Myth-Buster!

✗ Myth: "spring allergies and colds are the same, so there's no need to take precautions."

✓ Fact: While allergies and colds share symptoms, they are caused by different things! Allergies are triggered by pollen and don't spread, but colds are caused by viruses and can be contagious. If you have a fever, body aches, or symptoms lasting more than 10 days, it may not be allergies—stay home and prevent spreading germs! By following these simple steps, we can enjoy a safe and healthy spring season together!